

CATALOGUE of PAINTINGS

INGESTRE HALL RESIDENTIAL ARTS CENTRE



INGESTRE FESTIVAL ASSOCIATION
October 2013



CATALOGUE of PAINTINGS

**INGESTRE HALL RESIDENTIAL ARTS
CENTRE**

**Ingestre
Stafford
ST18 0RF**

©Ingestre Festival Association- October 2013

Printed by Imagaprint Ltd.
Hargreaves Court, Dyson Way, Staffordshire Technology Park,
Staffordshire, ST18 0WN www.imagaprint.co.uk

CONTENTS

Contents	Page 3
Acknowledgements	Page 4
Introduction and History of the collection	Page 5-6
Paintings (Alphabetical)	Pages 7-9
Artists INDEX	Pages 10-11
Paintings in numerical order (1-66)	Pages 12-53

ACKNOWLEDGEMENTS

In 2013, Ingestre Festival Association celebrated the 400th anniversary of the building of Ingestre Hall in 1613. As part of those celebrations we wanted to inspire visitors to find out more about the rich heritage of this Staffordshire jewel. The Festival provided a wonderful opportunity to open Ingestre Hall and its collection of paintings to the public. We have been able to produce this catalogue with the support of the National Lottery, through a Sharing Heritage Grant from the Heritage Lottery Fund, Sandwell Council who own Ingestre Hall, Stafford Society of the National Association of Decorative & Fine Arts Societies (NADFAS), staff of Ingestre Hall and local residents.

We hope that everyone will enjoy finding out more about this fascinating collection.

We also acknowledge the following sources of information and photographs.

Text from: A catalogue of The Pictures of Ingestre Hall belonging to The Rt, Hon. The Earl of Shrewsbury compiled by Anthony Crofton 1953 by kind permission of the 22nd Earl of Shrewsbury.

Photographs of paintings used with the permission of Sandwell Council. Photographs of the portraits in oils can also be found at <http://www.bbc.co.uk/arts/yourpaintings/>.

We have taken all reasonable steps to ensure that this publication is accurate and all reference material and photographs used have been authorised by the correct copyright owner and attributed accurately. If you find an error or have other information to add, please contact Gill Broadbent at gillbroadbent@aol.com so that they can be amended or included in any future editions.

INTRODUCTION AND HISTORY OF THE PORTRAITS

Ingestre Hall had a rich heritage of portraits and paintings. We know this from a catalogue created in 1953 by Anthony Crofton¹. He used the diaries of Mr. William Towers Mynors, the 20th Earl's secretary and the inventory Mynors created in the late 1800 and early 1900's. This work enables us to find out more about the paintings and their history including the disastrous fire in 1882.

In 1953 Mr Crofton wrote:

" After the disastrous fire at Ingestre in 1882 all the pictures and other objets d'art that had been saved were carefully numbered and listed by the then (20th) Earl of Shrewsbury's lifelong private secretary, Mr. William Towers Mynors, who subsequently added to his inventory the pictures brought from time to time to Ingestre from Alton Towers and elsewhere.

No earlier house-lists remain, however, to tell of what there was in Ingestre before the fire, nor (curiously enough) have any been found of what was then at Alton; and, bearing upon the contents of the present catalogue, it is perhaps worthwhile recalling that the ravages of fire have in the past two and a half centuries taken a heavy toll of the various Shrewsbury houses.

On 3 Feb., 1699/1700, the Duke of Shrewsbury had cause to write in a letter to Lord Rochester, ". . . my other house in Worcestershire being lately in part burnt down, has put me upon fresh thoughts of building for want of a decent place to live in" (*Clarendon Correspondence*, ii, p. 345); but

¹ A catalogue of The Pictures of Ingestre Hall belonging to The Rt, Hon. The Earl of Shrewsbury compiled by Anthony Crofton

it is not clear if he was then referring to Grafton Manor or to Huddington Court. Then, in 1710, Grafton was definitely in its greater part burned to the ground, and in 1831 the same fate overtook Heythrop Park, the great mansion in Oxfordshire built by the Duke and filled with his treasures, the place being completely gutted.

Whether Mr. Mynors had any earlier lists to go upon, or whether he had to rely solely on what name tabs and inscriptions were to be found on the frames and canvases at Ingestre and Alton is not known, but in all events he made a very exact inventory, adding to it between the years 1882 and 1935 any data about the portraits that came to his hands. His inventory provided the basis from which this catalogue has been developed; without it the present work would not probably even have been begun.....The real good fortune this work has had is that throughout it the author has been allowed to lean heavily on the arm of Professor Ellis Kirkham Waterhouse, Director of the Barber Institute of Fine Arts, Birmingham, whose learning and generously given advice is the most important"

Following the sale of Ingestre Hall in 1960 to West Bromwich, which subsequently became Sandwell Council, some of the pictures remained at Ingestre Hall. However, they have never been properly recorded in a catalogue to help visitors to the Hall to find out more about them, their artists and the subjects of the paintings.

We hope that everyone who visits Ingestre Hall in the future will enjoy using this catalogue to find out more about this fascinating collection.

INDEX TO THE PORTRAITS

(Numerals indicate the catalogue number of the pictures)

CHETWYND

- 17 ESTHER, Mrs CHETWYND 1699 – 1741
- 50 ESTHER, Mrs CHETWYND 1699 – 1741 JOHN CHETWYND 1720 - 1741
- 31 CHARLES CHETWYND 2nd Earl Talbot 1777 - 1849
- 33 CHARLES CHETWYND 2nd Earl Talbot 1777 - .1849
- 34 CHARLES JOHN ALTON CHETWYND Viscount Ingestre 1882-1915
- 20 Hon. FRANCES CHETWYND 1725 - 1805
- 30 JOHN CHETWYND 2nd Viscount Chetwynd 1697 – 1767
- 63 A PORTRAIT GROUP JOHN CHETWYND, 2nd Viscount Chetwynd and his wife and family
- 29 JOHN CHETWYND M.P. d. 1702
- 38 JOHN CHETWYND 1st Earl Talbot 1750 - 1793
- 26 WALTER CHETWYND III M.P. of Ingestre 1634/35 - 1693

TALBOT & CHETWYND TALBOT

- 49. ADELHIDA, Duchess of Shrewsbury 1665 - 1726
- 3 ALATHEA, Countess of Arundel 1593-1654 CHARLES TALBOT 1st Lord Talbot 1685-1737
- 46. ANNA MARIA, Countess of Shrewsbury 1642-1702
- 24 ANNA THERESA Countess of Shrewsbury 1836 – 1912
- 19 Hon. Mrs CATHERINE TALBOT 1722 - 1785
- 44. Hon. CATHERINE TALBOT 1722-1785
- 52. CATHERINE TALBOT 1722 – 1785 JOHN CHETWYND TALBOT
- 45. CHARLES TALBOT 12th Earl of Shrewsbury 1660 - 1718
- 1 CHARLES TALBOT Duke and 12th Earl 1660 - 1718

- 18** CHARLES, TALBOT 12th Earl & 1st Duke of Shrewsbury 1660 - 1718
- 4** CHARLES TALBOT 1st Lord Talbot 1685-1737
- 56** Cpt. CHARLES ARTHUR TALBOT 1834 - 1869
- 59** CHARLES HENRY JOHN CHETWYND-TALBOT 20th Earl of Shrewsbury 1860 - 1921
- 36** CHARLES JOHN CHETWYND-TALBOT 19th Earl of Shrewsbury 1830 - 1877
- 39** CHARLES JOHN CHETWYND-TALBOT 19th Earl of Shrewsbury 1830-1877
- 64** CHARLOTTE, COUNTESS TALBOT 1754-1804
- 6** EDWARD TALBOT 8th Earl of Shrewsbury 1561 – 1618
- 7** ELIZABETH Countess of Shrewsbury 1520 – 1608
- 12** ELLEN MARY Countess of Shrewsbury
- 5** FRANCIS TALBOT 5th Earl of Shrewsbury 1500 - 1560
- 13** FRANCES THOMASINE Countess Talbot 1778 - 1819
- 8** GEORGE TALBOT 6th Earl 1522 – 1590
- 9** GILBERT TALBOT 7th Earl 1552 - 1616
- 53** Sir GILBERT TALBOT 1606 - 1695
- 14** Sir GILBERT TALBOT 1606-1695
- 28** Sir GILBERT TALBOT Knt. of Salwarpe 1606 - 1695
- 22** HENRY JOHN (CHETWYND-TALBOT) 1803 - 1868
- 35** HENRY JOHN CHETWYND-TALBOT Viscount Ingestre 1803-1868
- 60** JOHN GEORGE CHARLES HENRY ALTON ALEXANDER CHETWYND-TALBOT 21st Earl of Shrewsbury 1914 -1980
- 54** Sir JOHN TALBOT 1st Earl of Shrewsbury 1383 - 1453
- 15** JOHN TALBOT Esq. 1542 - 1611
- 21** Hon. JOHN (“JACK”) TALBOT 1664 – 1685/86
- 25** Hon. JOHN TALBOT M.P. 1711 - 1756
- 10** JOHN TALBOT 16th Earl of Shrewsbury 1791 - 1852
- 41** JOHN TALBOT 16th Earl of Shrewsbury 1791-1852 and CHARLES TALBOT 1790-1802

- 16** MARGARET TALBOT d. 1620
- 11** MARIA THERESA Countess of Shrewsbury 1795 - 1856
- 48** Hon. MARY TALBOT 1698 - 1752
- 55** Sir REGINALD ARTHUR JAMES TALBOT 1841 - 1929
- 23** THERESA SUSEY HELEN TALBOT, 1856 – 1919 & CHARLES HENRY JOHN Viscount Ingestre 1860 - 1921
- 2** Rt. Revd WILLIAM TALBOT, Bishop of Durham 1658 - 1730

FAMILY GROUPS

- 51** FAMILY PORTRAIT GROUP
Three of the younger children of the 2nd Earl Talbot playing on a sofa.
- 58** PORTRAIT GROUP of the three eldest children of the 2nd Earl Talbot in a woodland scene.
- 57** FAMILY GROUP OF Capt. CHARLES ARTHUR TALBOT


OTHER PORTRAITS

- 32** Lord JAMES BERESFORD 1816 - 1841
- 62** EARL OF DARTMOUTH
- 61** ALDERMAN REUBEN FARLEY JP
- 47** A LADY
- 40** THE VIRGIN WITH THE INFANT CHRIST
- 42** WILLIAM PITT P.C. 1759-1806

INDEX TO OTHER PAINTINGS

- 37** A COUNTRY SCENE
- 27** BEAU PARK
- 43** CROSSING THE BROOK
- 65** INGESTRE HALL BEFORE THE FIRE IN 1882
- 66** INGESTRE HALL AFTER THE FIRE IN 1882

INDEX TO THE ARTISTS

ANGLO FLEMISH, **6**
ASHFORD WILLIAM **27**
BARDWELL Thomas, **25, 52**
BATONI, Pompeo Girolamo, **38**
BEALE, Mary,..**21, 46**
CLIFFORD Edward,..**24**
CLOVER, Joseph, **32**
SALOME, Anthony, **22**
DAHL, Michael, **45**

ENGLISH 16th CENTURY SCHOOL, **5, 7, 8, 9**
ENGLISH EARLY 17TH CENTURY SCHOOL, **3**
ENGLISH 18th CENTURY SCHOOL, **41, 62**
ENGLISH 20th CENTURY SCHOOL, **61**
GRANT, Harry, **12**
HAMBURGER, Johann Konrad,..**10**
HARDY, Durofield, **34**
HERKOMER von, Hubert, **59**
JACKSON, John, **35**
JANSSEN, Cornelius,..**15,16**
LELY Sir Peter, **26**
KNELLER, SCHOOL OF..**1, 2, 49**
MEDINA, Sir Baptist, **29**
ORDE Cuthbert Julian, **60**
PHILLIPS R.A. ,Thomas, **13, 51, 58**
PRINCEP, Valentine Cameron, **23**
QUENTIN DE LA TOUR, Maurice, **19,20**
REYNOLDS, Painted after, **64**
SLAUGHTER R.H.A., Stephen, **30**
SOLIMENA, Francesco (in the style of) **40**

THOMPSON, Thomas Clement VANDERBANK John, **4**
VAN DE MYN Herman, **50, 63**
VANDYCK, School of, **28, 53**
VENITIAN SCHOOL 18TH CENTURY, **47**
VIGEE LE BRUN M.E. **33**
WORTLEY, Archibald J Stuart, **55**

COPY, 42, 43, 54

UNKNOWN, 11, 14, 17, 18, 36, 39, 44, 48, 56, 57

1 CHARLES TALBOT Duke and 12th Earl 1660 - 1718

School of Kneller painted about 1711.



h. 140 x w. 100cm

CHARLES TALBOT, Duke and 12th Earl is dressed in full Garter Robes, his wand of office as Lord Chamberlain held slanting backwards across his body. A remarkable man, he played an all important part in shaping the history of England in the two great crises 1688 and 1714. He invited King William III to come to England and for several years after was his chief Secretary of State. At the moment of Queen Anne's death, he held the three greatest offices in the state; he was Lord High Treasurer, Lord Chamberlain, and Lord Lieutenant of Ireland. It was in Ireland he was nick-named 'Polyphemus' or 'Ireland's Eye' alluding to the fact that he had one eye. The Government Agent, John Macky remarked in the Roxburghe Club, "Characters"...'Although he had but one eye, yet he has a very charming countenance, and is the most generally beloved by the Ladies and of any Gentleman in his time...' In fact his eye was blemished and not missing.

**2 Rt. Revd WILLIAM TALBOT, Bishop of Durham
1658 - 1730**



h. 140 x w. 100cm

School of Kneller painted about 1717.

Rt. Revd WILLIAM TALBOT D.D., Bishop of Durham. The Bishop of Salisbury and Chancellor of the Order of the Garter at the time. He is wearing the mantle of the Garter over his Episcopal robes.

3 ALATHEA, Countess of Arundel 1593-1654

ALATHEA, Countess of Arundel and Surrey, Baroness Talbot, Furnival and Le Strange. was the wife of Thomas Howard, Earl of Arundel and Surrey, ancestress of the subsequent Dukes of Norfolk, and third daughter and eventual sole heiress of Gilbert (Talbot), 7th Earl of Shrewsbury, K.G. She is dressed in a dark blue bodice, surcoat, and farthingale. The bodice is heavily embroidered in white and silver, with a low cut 'V' collar of Point de Venise lace, and clusters of jewels at the point and on the shoulders. She is wearing a Jewelled Hat with Ostrich feathers. A monogrammed jewel bearing the greek letters *ih̄s* is Catholic iconography for the name of Christ. She wears a similar monogrammed jewel in her Rubens portrait. It reflects her life-long membership of the Roman Church.

English Early 17th
century school
painted about 1617



h. 100 x w. 75cm

**4 CHARLES TALBOT 1st Lord Talbot
1685-1737**

John Vanderbank, painted about 1735.



h. 140 x w. 100cm

CHARLES TALBOT, 1st Lord Talbot, Baron of Hensol, Lord High Chancellor of Great Britain. He is in the robes of Lord Chancellor and his left hand holds the Chancellor's purse. There is a replica of this portrait at All Souls' Oxford

**5 FRANCIS TALBOT 5th Earl of Shrewsbury
1500 - 1560**

Painted in 1555 by the English School.

FRANCIS TALBOT, 5th Earl of Shrewsbury, K.G. Lord President of the Council of the North. He wears a black high-collared surcoat ornamented with rows of jewelled buttons worn open at the front, a white ruff, a hat, a pendant from his neck and the George and Garter on a miniature chain of the order.



h. 71 x w. 57cm

6 EDWARD TALBOT 8th Earl of Shrewsbury

1561 – 1618

Painted about 1616 Anglo-Flemish, early 17th Century



h. 71 x w. 57cm

EDWARD TALBOT, 8th Earl of Shrewsbury. He is facing slightly right, wearing a patterned white and grey satin doublet, large white ruff, and a black cloak over his shoulders. There is a gold and jewelled pendant with drop pearl hanging by gold cords from round his neck and a gold sword hilt behind his right side.

7 ELIZABETH Countess of Shrewsbury

1520 – 1608

Painted in 1575 English 16th Century School.

ELIZABETH (“Bess of Hardwick”) Countess of Shrewsbury. She was the second wife of the 6th Earl of Shrewsbury. Before that marriage she had, in turn, been the wife of Robert Barlow, Sir William Cavendish (by whom she had issue and was ancestress of the Dukes of Newcastle and Devonshire) and Sir William St. Loe. She is holding a pendant from her waist sash and a glove.



h. 70 x w. 50cm

8 GEORGE TALBOT 6th Earl

1522 – 1590

Painted 1580. English 16th Century School



h. 110 x w. 90cm

GEORGE TALBOT, 6th Earl. Earl Marshall of England. he was the 'Keeper of Mary, Queen of Scots' for fifteen years.

9 GILBERT TALBOT 7th Earl

1552 - 1616

Painted by English 16th Century School.

GILBERT TALBOT, 7th Earl. The inscription reads 'Gilbert Talbot' and in the other corner "Aetatis Suae 40, 20 die Novr 1592."



h. 110 x w. 90cm

10 JOHN TALBOT 16th Earl of Shrewsbury
1791 - 1852

Painted at Alton Towers by Johann Konrad Hamburger in 1832 and signed but this appears to read Julius rather than Johan on the canvas.

JOHN TALBOT, 16th Earl of Shrewsbury and Waterford. Standing in Coronation Robes with a view of Alton Towers in the left background.



h. 250 x w. 150cm

11 MARIA THERESA Countess of Shrewsbury
1795 - 1856

MARIA THERESA, Countess of Shrewsbury was the wife and distant cousin of the 16th earl and daughter of William Talbot Esq., of Castle Talbot, County Wexford. She is standing in her Coronation Robes, her coronet and tiara on her head, wearing the Shrewsbury necklace", and round her waist, another diamond tiara. There is a view of the gardens at Alton Towers in the background. there is a small brown dog on a white cushion in the foreground left hand side.



h. 250 x w. 160cm

12 ELLEN MARY Countess of Shrewsbury

Painted at the Grand Entrance at Alton Towers in 1894 by Harry Grant.



h. 230 x w. 147cm

ELLEN MARY, Countess of Shrewsbury died 23 August 1940. She was wife of the 20th Earl and youngest daughter of Charles Rowland Palmer-Morewood, Esq., J.P., D.L. of Alfreton Hall. Two dogs in the foreground one black and the other a Collie

13 FRANCES THOMASINE Countess Talbot

1778 - 1819

Painted by Thomas Phillips R.A.

FRANCES THOMASINE, Countess Talbot, wife of the 2nd Earl Talbot, and elder daughter of Charles Lambart, Esq., M.P., of Beau Park, County Meath. This is the only portrait of her at Ingestre. It was exhibited at the Royal Academy in 1807. It was badly damaged by fire in 1882 and had to be restored, which may account for the “wooden” look of the left arm and hand. Painted by Thomas Phillips R.A.



h. 130 x w. 100cm

14 Sir GILBERT TALBOT
1606-1695



h. 70 x w. 50cm

Sir GILBERT TALBOT, Knight of
Salwarpe.

15 JOHN TALBOT Esq.
1542 - 1611

Painted posthumously about 1640 by Cornelius Janssen and signed
and dated by the artist.

JOHN TALBOT, Esq. of Grafton.
John Talbot had been dead some
29 years and this portrait was
evidently composed from an earlier
picture, probably around the year
1600.



h. 70 x w. 60cm (estimated)

16 MARGARET TALBOT

d. 1620

The portrait was painted by Cornelius Janssens van Ceulen in 1640



MARGARET TALBOT was the second wife of John Talbot of Grafton and daughter of Edward (Windsor) 3rd Lord Windsor. She died in 1620. Again the portrait was painted posthumously in 1640 and was no doubt copied from a miniature of about 1600.

h. 70 x w. 60cm (estimated)

17 ESTHER, Mrs CHETWYND

1699 – 1741

Painted about 1718.

ESTHER, Mrs CHETWYND, afterwards Viscountess Chetwynd, was the wife of the 2nd Viscount, John Chetwynd and daughter and heir of Richard Kent, Esq., of New Sarum.



h. 70 x w. 50cm

**18 CHARLES, TALBOT 12th Earl & 1st Duke of Shrewsbury
1660 - 1718**



Charles, Talbot 12th Earl & 1st
Duke of Shrewsbury.

Size h. 70 x w. 50cm

**19 Hon. Mrs CATHERINE TALBOT
1722 - 1785**

This half length pastel portrait is attributed to Maurice Quentin de la
Tour circa 1745.

Hon. Mrs CATHERINE TALBOT, wife
of the Hon. John Talbot and elder
daughter of John Chetwynd, 2nd
Viscount Chetwynd.



h. 110 x w. 100cm

20 Hon. FRANCES CHETWYND

1725 - 1805

Pastel portrait by Maurice Quentin de la Tour



h. 110 x w. 100cm

Hon. FRANCES CHETWYND was the daughter of John, 2nd Viscount Chetwynd. She is wearing a black velvet dress and her hair is dressed in pearls. A companion portrait of the other pastel portrait (19) by Maurice Quentin de la Tour. The sisters appear in a large canvas elsewhere.

21 Hon. JOHN (“JACK”) TALBOT

1664 – 1685/86

The portrait is by Mary Beale painted between 1683 and 1686

Hon. JOHN (“JACK”) TALBOT, younger brother of Charles, Duke and 12th earl of Shrewsbury. Born 1664 and had the misfortune to be killed outright in a duel by Henry, 1st Duke of Grafton (who was at the same time only saved from death or a serious wound by a buckle or miniature he wore at his chest) on 2nd February 1685/86 when he arrived within a few days of his majority.



h. 70 x w. 50cm

22 HENRY JOHN (CHETWYND-TALBOT)

1803 - 1868

Drawn about 1860 in crayons by Anthony De Salome and signed.



HENRY JOHN (Chetwynd-Talbot), 18th Earl of Shrewsbury and Waterford, and 3rd Earl Talbot C.B. After a court case in 1860, he inherited the title of Earl of Shrewsbury and Waterford and estates including Alton Towers from a distant relative.

23 THERESA SUSEY HELEN TALBOT, 1856 – 1919

CHARLES HENRY JOHN Viscount Ingestre 1860 - 1921

Painted about 1870 by Valentine Cameron Prinsep. R.A.

The Lady THERESA SUSEY HELEN TALBOT, later Marchioness of Londonderry. She has long brown hair and grey eyes, standing in a white muslin dress with blue sash. Her hand is on the shoulder of her brother, CHARLES HENRY JOHN, Viscount Ingestre (afterwards 20th Earl of Shrewsbury). He was born 1860, died 1921. He is wearing a short black velvet suit. His hand rests on the head of a large Collie dog, beside a magnolia tree on the south front of Ingestre Hall.

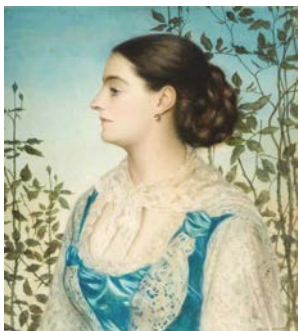


h. 250 x w. 120cm

24 ANNA THERESA Countess of Shrewsbury

1836 – 1912

Water colour portrait painted in 1875 and signed by Edward Clifford



h. 60 x w. 40cm

ANNA THERESA, Countess of Shrewsbury was the wife of the 19th Earl and the daughter of Captain Richard Howe Cockerell, R.N. The painting is of the “Pre-Raphaelite” School of the 19th Century.

25 Hon. JOHN TALBOT M.P.

1711 - 1756

Painted in 1753 and signed Thomas Bardwell.

Hon. JOHN TALBOT, M.P. of Lincoln’s Inn Fields and of Oddington, Gloucestershire, a Puisne Judge of the High Court. He was the 3rd son of the 1st Baron Talbot of Hensol, and ancestor of the Earls of Talbot, Viscounts of Ingestre, and of the 18th and subsequent Earls of Shrewsbury. He is in “Fancy Dress” in a golden brown satin doublet of the period of Charles I.



h. 200 x w. 110cm

26 WALTER CHETWYND III

M.P. of Ingestre

1634/35 - 1693

Painted by Sir Peter Lely in about 1655.

WALTER CHETWYND, Esq., M.P. of Ingestre. Born 1634/35, died 1693. The celebrated Staffordshire antiquary and builder of Ingestre Church. He was also a friend of Sir Christopher Wren and both were fellows of the Royal Society.



h. 70 x w. 50cm

27 BEAU PARK

Painted circa 1810 by P... C , Attributed to William Ashford

“A VIEW OF BEAU PARK”
The seat of the Lambart family in County Meath, Ireland. The home of Frances Thomasine, Countess Talbot. (See portrait **13**)



h. 75 x w. 120cm

**28 Sir GILBERT TALBOT Knt. of Salwarpe
1606 - 1695**

Painted about 1655 by the School of Vandyck,
probably whilst he accompanied Charles II in exile.



h. 75 x w. 50cm

Sir GILBERT TALBOT, Knight,
of Salwarpe was Master of
the Jewel Office to Charles II,
James II, and to William and
Mary. He was a diplomat. In
the Civil War he served as a
soldier.

**29 JOHN CHETWYND M.P.
d. 1702**

Painted about 1688 by Sir Baptist Medina.

JOHN CHETWYND, Esq., M.P. of
Maer Hall and Rudge, latterly of
Ingestre, died 1702. The father
of three Viscounts Chetwynd.



h. 80 x w. 50cm

30 JOHN CHETWYND
2nd Viscount Chetwynd 1697 – 1767
Painted about 1737 by Stephen Slaughter.



h. 80 x w. 50cm

JOHN CHETWYND, 2nd
Viscount Chetwynd.
Portrait 63 is of him and his
family in the Ingestre
Collection.

31 CHARLES CHETWYND 2nd Earl Talbot
1777 - 1849
Painted by Thomas Clement Thompson R.H.A.



h. 275 x w. 140cm

CHARLES CHETWYND (Chetwynd-Talbot), 2nd Earl Talbot, K.G., K.P. He was also Lord Lieutenant of Ireland, Lord Lieutenant of Staffordshire, standing in his robes of Grand Master of the Order of St. Patrick, with his son Hon. John Chetwynd Talbot standing behind dressed as a page. Exhibited in the Royal Academy in 1820 and in Dublin, where it is believed to have been painted by Thomas Clement Thompson R.H.A.

32 Lord JAMES BERESFORD

1816 - 1841

Painted by Joseph Clover in 1825 and signed.



Lord JAMES BERESFORD, 4th son of Henry de la Poer, 2nd Marquess of Waterford.

h. 100 x w. 80cm (estimated)

33 CHARLES CHETWYND

2nd Earl Talbot 1777-1849

The painting is signed “M.E. Vigee le Brun, a Petinbourg, 1798.”

CHARLES CHETWYND (Chetwynd-Talbot) 2nd Earl Talbot is wearing a dark blue cloak and white neck cloth. The portrait was painted by a talented friend of Marie Antoinette at St. Petersburg where Lord Talbot was then an honorary attaché to the British Ambassador.



h. 90 x w. 60cm

**34 CHARLES JOHN ALTON CHETWYND Viscount Ingestre
1882-1915**

Painted posthumously in 1915 by Durofield Hardy.



CHARLES JOHN ALTON CHETWYND (Chetwynd-Talbot), Viscount Ingestre M.V.O. Captain Royal Horse Guards. He is dressed in the full dress uniform of his regiment.

h. 75 x w. 60cm

**35 HENRY JOHN CHETWYND-TALBOT Viscount Ingestre
1803-1868**

Painted about 1829 by John Jackson R.A.



HENRY JOHN CHETWYND-TALBOT, Viscount Ingestre. Captain R.N. afterwards 18th Earl of Shrewsbury and 3rd Earl Talbot. He is wearing naval uniform with a stand-up collar and gold epaulettes. The orders of Bath and St. Louis of France on his left chest, and St. Anne of Russia about his neck.

h. 90 x w. 60cm

**36 CHARLES JOHN CHETWYND-TALBOT 19th Earl of Shrewsbury
1830 - 1877**

The portrait was painted about 1855.



h. 90 x w. 60cm

CHARLES JOHN CHETWYND-TALBOT,
19th He is wearing full dress uniform
of his regiment.

**37 A COUNTRY SCENE
Dutch School**

A COUNTRY SCENE is a painting of a farmhouse and trees. There is a man with a wagon, a woman walking with a basket, and other figures. Dutch School originally dated late 17th century, re-dated on 11th December 1986 as 19th century.



h. 97 x w. 130cm

38 JOHN CHETWYND 1st Earl Talbot

1750 - 1793

Painted in Rome in 1773 and signed by the artist Pompeo Girolamo Batoni



JOHN CHETWYND (Chetwynd-Talbot), 1st earl Talbot, Viscount Ingestre, and 3rd Baron Talbot of Hensol. He is standing amidst the ruins of a classical Roman scene

h. 90 x w. 70cm

**39. CHARLES JOHN CHETWYND-TALBOT 19th Earl of Shrewsbury
1830-1877**

CHARLES JOHN CHETWYND-TALBOT, 19th Earl of Shrewsbury. Born 1830, died 1877. Painted as a child about 4 years old. He is in a red dress as was the custom at that time.



h. 47 x w. 41cm

40. THE VIRGIN WITH THE INFANT CHRIST .

Painted in the manner of Francesco Solimena (1657-1747)



THE VIRGIN WITH THE INFANT CHRIST and the Holy City in the background painted in the manner of Francesco Solimena (1657-1747)

41. JOHN TALBOT 16th Earl of Shrewsbury 1791-1852

and CHARLES TALBOT 1790-1802

English 18th century.



h. 90 x w. 70cm

JOHN TALBOT, born 1791 and afterwards 16th Earl of Shrewsbury, in a white frock with blue sash. He died in 1852. His elder brother CHARLES TALBOT, born 1790, died in 1802. He wears a fawn “buster suit” with wide white collar and kneels holding a little dog. Painted at the side of Grafton Manor in about 1796. English 18th century.

**42. WILLIAM PITT P.C.
1759-1806**



h. 140 x w. 110cm

WILLIAM PITT, P.C. Born 1759, died 1806. This is one of the several studio copies that were made of John Hoppner's well known picture painted in 1805 and now in the National Gallery.

43. "CROSSING THE BROOK"

The painting is a copy after Sir Joshua Reynolds.



h. 70 x w. 50cm

CROSSING THE BROOK

A little girl called Miss Cholmondeley, afterwards Lady Bellingham, carrying a white dog across a stream.

**44. Hon. CATHERINE TALBOT
1722-1785**



h. 110 x w. 100cm

Hon. Mrs CATHERINE TALBOT was the eldest daughter and de facto heiress of John (Chetwynd), 2nd Viscount Chetwynd, and later the wife of Hon. John Talbot. She wears a grey décolleté dress with a lace up bodice tied at the top with a blue bow and a wide swelling skirt. She is wearing a light brown straw hat with a blue ribbon, and holding a shepherd's crook. The picture of the heiress of Ingestre was formerly of a greater length but was badly damaged in the fire of 1882 and had to be cut down.

**45. CHARLES TALBOT 12th Earl of Shrewsbury
1660 - 1718**

Possibly originally by Michael Dahl but very much restored and re-painted in the process.



h. 140 x w. 100cm

CHARLES TALBOT, Duke and 12th Earl of Shrewsbury, Marquess of Alton, K.G. is dressed in full Garter Robes and a large dark wig. This picture was one shown in the Queen Anne and Malborough Exhibition at Chesterfield House, London, in 1934, and was subsequently purchased by Lord Shrewsbury in June of that year, from David Minlore.

**46. ANNA MARIA, Countess of Shrewsbury
1642-1702**

It was painted in 1659 when she was 17 years old, perhaps by Mary Beale.



h. 70 x w. 55cm

ANNA MARIA, Countess of Shrewsbury was the daughter of Robert Brudenell 2nd Earl of Cardigan and his second wife Anne Savage. She was the second wife of Francis, 11th Earl of Shrewsbury. He was killed in a duel in 1688 by her then and most famous lover, George Villiers, 2nd Duke of Buckingham. She later became the wife of George Rodney Bridge, Esq. The Countess was the mother of Charles Talbot the 1st Duke of Shrewsbury.

47. A LADY

Possibly the Venetian School 18th century.



h. 80 x w. 62cm

A LADY. circa 1730-40. She has brown eyes with powdered hair brushed back close against her head, a jewelled spray at the crown. She is wearing a dark cream satin dress with a brown velvet stole draped over her left arm. The coat of arms on a plain oval "per fesse Or and Argent in chief three mascles (lozenges) 3 and 1 Gules and in base four 3 and 1 Azure" These arms are of a continental origin but neither they nor the lady have so far been identified.

48. Hon. MARY TALBOT

1698 - 1752



h. 135 x w. 103cm

Hon. Mrs. MARY TALBOT was the wife of George Talbot of Heythrop. Mother of the 14th Earl of Shrewsbury. She was the daughter of Thomas Fitzwilliam. Her husband was often referred to as the Earl of Shrewsbury because his brother who really was the Earl was a Jesuit priest and did not adopt the title that was rightly his. Incorrectly inscribed as Mary, "Wife of George, Earl of Shrewsbury."

49. ADELIDE, Duchess of Shrewsbury

1665 - 1726

The portrait was painted about 1710 and is attributed to the School Kneller.



h. 135 x w. 103cm

ADELHIDE, Duchess of Shrewsbury. was the wife of Charles (Talbot) 1st Duke of Shrewsbury. She was the widow of Signori Roffini. She was the younger daughter of Andrea , Marquis Paleotti of Bologna, Italy, by his second wife, Maria Christina the daughter of Carlo Dudley, titular Duke of Northumberland.

50. ESTHER, Mrs CHETWYND 1699 – 1741
JOHN CHETWYND 1720 - 1741
Van De Myn Portrait



h. 150 x w. 97cm

ESTHER, Mrs CHETWYND, afterwards Viscountess Chetwynd was the wife of the 2nd Viscount, John Chetwynd and daughter and heir of Richard Kent, Esq., of New Sarum. She is almost full face in front of a pillar and the foliage of a tree, wearing an oyster satin décolletée dress, the bodice adorned with pearls and diamonds. Her fair hair is dressed with pearls and small flowers, falling in a long curl over her right shoulder. Her arm is around the shoulder of her young son, JOHN CHETWYND (then aged about 4 years) . He was born 1720, died 1741.

51. FAMILY PORTRAIT GROUP

Painted in 1811 by Thomas Phillips R.A.



h. 145 x w. 145cm

FAMILY PORTRAIT GROUP. Three of the younger children of the 2nd Earl Talbot playing on a sofa.

The Hon. ARTHUR CHETWYND-TALBOT born 1805 in a “buster suit” of white and black satin.

The Hon. CECIL late Marchioness of Lothian, born 1808 in a white frock and red beads.

The Hon. JOHN CHETWYND-TALBOT born 1806 in a fawn-pink frock and trousers.

A brown and white dog is asleep beside the sofa.

52. CATHERINE TALBOT
1722 – 1785
JOHN CHETWYND TALBOT

Painted in 1752 and signed Thomas Bardwell.



h.. 135 x w. 100cm

CATHERINE TALBOT, of Ingestre and Hillingdon was the wife of the Hon. John Talbot M.P. and elder daughter and 'de facto' heiress of John (Chetwynd) 2nd Viscount Chetwynd. She is seated in a high backed chair, her fair brown hair is dressed close to her head with pearls. She is wearing a long white satin dress, low cut bodice, bound in blue, the front ornamented with pearls and continued up to the throat in a white lace chemisette piped with blue. Her left hand is resting on the shoulder of her infant son, JOHN CHETWYND TALBOT (later the 3rd Baron and 1st Earl Talbot) then aged 2 years.

53. Sir GILBERT TALBOT
1606 - 1695

Painted probably about 1645. School of Vandyck – possibly by Theodore Russel.



h. 38 x w. 30cm

Sir GILBERT TALBOT, Knt., of Salwarpe is wearing plain body armour and a white collar turned down over his gorget.

**54. Sir JOHN TALBOT 1st Earl of Shrewsbury
1383 - 1453**

19th century painting done in reproduction of Thomas Cecil's engraved plate of about the year 1630



h. 50 x w. 38cm

Sir JOHN TALBOT, 1st Earl of Shrewsbury and Waterford, 6th Baron Talbot K.G. is standing in full armour in this 19th century painting. It is a reproduction of Thomas Cecil's engraved plate of about 1630, and includes a lengthy catalogue of the great Earl's honours and titles, partly imaginary and drawn from Shakespeare's play Henry VI" together with various knightly and martial emblems with which Cecil embellished his work.

**55. Sir REGINALD ARTHUR JAMES TALBOT
1841 - 1929**

Painted about 1903 by Archibald J Stuart Wortley.



h. 200 x w. 97cm

Sir REGINALD ARTHUR JAMES TALBOT K.C.B. Born was the 3rd son of the 18th Earl of Shrewsbury and brother-in-law of the artist. He is standing profile, turned right, in full dress uniform of the Life Guards.

56. Cpt. CHARLES ARTHUR TALBOT
1834 - 1869



h. 250 x w. 140cm

A full length portrait of Captain CHARLES ARTHUR TALBOT, of Aston Hall, Cheshire, grandson of the 2nd Earl Talbot. He wears the uniform of the Rifle Brigade with a dress sword on his left hip, 3 medals on his right breast and a military, cockaded helmet under his left arm and leather bandolier.

57. FAMILY GROUP OF Capt. CHARLES ARTHUR TALBOT



h. 250 x w. 140cm

The family group of Captain CHARLES ARTHUR TALBOT. This was painted at Aston Hall, Cheshire about 1864 and it is believed that it was part of a large canvas in which portrait **56** of Captain Charles Arthur Talbot was included (in a Rifle Brigade uniform).

In the family group we find:

MARY MATILDA, Mrs TALBOT, who died in 1873

HARRIET CECIL TALBOT, afterwards Mrs Gramshaw, born 1857, died 1937.

ALGERNON CHARLES TALBOT, born 1859, died 1888

GWENDOLINE MARY TALBOT, afterwards Mrs Jefferson, born 1861, died 1948.

ARTHUR HERVEY TALBOT, the eventual heir of Aston Hall. Born 1863, died 1927.

58. PORTRAIT GROUP

Painted by Thomas Phillips R.A. and signed and dated by the artist.



h. 200 x w. 180cm (estimated)

PORTRAIT GROUP of the three eldest children of the 2nd Earl Talbot in a woodland scene:

CHARLES THOMAS, Viscount Ingestre, born 1802, died 1826, in a “buster suit”, his hand resting on the head of a black curly coated dog with a red collar. The Hon. HENRY JOHN CHETWYND-TALBOT (later Viscount Ingestre and 18th Earl of Shrewsbury) standing in a white frock and trousers, red slippers and red beads. He has flowers in his hair. CHARLOTTE CHETWYND-TALBOT (“Fanny”) later the Countess of Dartmouth, then aged 6, in a long white frock, mauve sash and red beads. She is kneeling in front of her brother Henry. A beribboned beaker bonnet is on the ground beside her. Painted by Thomas Phillips R.A. and signed and dated by the artist. Exhibited in the year of its completion 1807 at the Royal Academy.

59. CHARLES HENRY JOHN 20th Earl of Shrewsbury
1860 - 1921

Painted in 1903 by Hubert von Herkomer.



h. 210 x w. 140cm

CHARLES HENRY JOHN, 20th Earl of Shrewsbury and Waterford K.C.V.O. He is dressed in Coronation Robes worn over full dress uniform with his wand of office as Lord High Steward of Ireland held in his right hand.

**60. JOHN GEORGE CHARLES HENRY ALTON ALEXANDER
CHETWYND
21st Earl of Shrewsbury
1914 -1980**

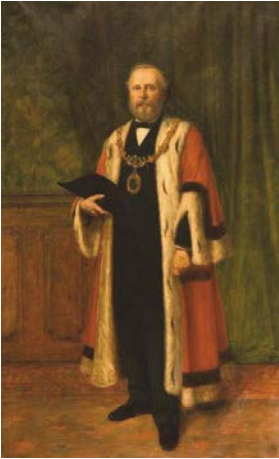
Painted in 1937 by Cuthbert Julian Orde.



h. 250 x w. 160cm

JOHN GEORGE CHARLES HENRY ALTON ALEXANDER CHETWYND (Chetwynd-Talbot),
21st Earl of Shrewsbury and Waterford. He is dressed in Coronation Robes worn over black court dress and in his right hand his wand of office as Lord High Steward of Ireland.

61. ALDERMAN REUBEN FARLEY JP



Size h. 210 x w.140cm

ALDERMAN REUBEN FARLEY J.P Early 20th century, English school, full length portrait dated 1915.

In June 1876, Alderman Reuben Farley approached the fifth Earl of Dartmouth and proposed the idea of leasing land from the Dartmouth estate to establish a park for the people of West Bromwich. The Earl offered two sites and 20.2ha at Cooper's Hill, West Bromwich, at the nominal rent of £1 per year for 99 years was chosen. The park was opened to the public by the Earl of Dartmouth on 3 rd June 1878.

62. EARL OF DARTMOUTH

Late 18th century English school, full length Portrait.

The Earl of Dartmouth offered land at Coopers Hill at a nominal rent of £1 a year for 99 years to West Bromwich Council to establish a park. In November 1877, the Earl donated trees and shrubs for planting and a fountain from Patshull, near Wolverhampton. The park was opened to the public by the Earl of Dartmouth on 3 rd June 1878; the day was observed as a general holiday and the thoroughfares and the park were crowded with over 40,000 people.



Size h. 210 x w.140cm

63. A PORTRAIT GROUP

Painted by Herman van der Myn in 1732 and signed.



h. 250 x w. 390cm

A PORTRAIT GROUP: JOHN CHETWYND, 2nd Viscount Chetwynd and his wife and family in the pillared gateway leading into their residence Maer Hall, in Staffordshire. In the picture, from left to right:

The Hon. CATHERINE CHETWYND, then aged 9, later Mrs Talbot.

JOHN, 2nd Viscount CHETWYND, then aged 52, but he had not succeeded to the title and to Ingestre at this time.

ESTHER, Viscountess CHETWYND, then aged 33, tall in a brown silk décolletée dress, trimmed round the top with white lace.

The Hon. FRANCES CHETWYND, the aged 7, wearing a brown silk dress with a bunch of apples clasped at her waist.

The Hon. JOHN CHETWYND, then aged 12 (he died in 1741) in a light blue riding coat with silver buttons. A groom, dressed in brown, holding a pony with a white blaze on its face.

**64. CHARLOTTE, COUNTESS TALBOT
1754-1804**

Painted after Reynolds



Size h. 250 x w. 160cm

CHARLOTTE, COUNTESS TALBOT, born 1754, died 1804

This painting has considerable damage to the frame and canvas.

65 INGESTRE HALL BEFORE THE FIRE IN 1882

Water colour signed by H.W.Henley



Size h 30 x w.50 cm

Ingestre Hall southern elevation in Summer looking from boundary balustrade. This may have been painted between 1883-85 after the Hall's restoration.

66 INGESTRE HALL AFTER THE FIRE OCTOBER 1882.

Water colour signed by H.W.Henley



Size h 30 x w.50 cm

Ingestre Hall, southern elevation, in Autumn looking from boundary balustrade. This may have been painted from a photograph. Line of newly planted hedge in the foreground alongside a gravel path. Extensive fire damage with all roof structures to central cupola destroyed. South -east wing appears to be less damaged.